

Have you heard
the news about
Paul Reed yet?



No - what's he
done this time?

**Paul Reed Homes - Gold Award
Cant. Master Builders Association
2009 House of the Year**

**Plus
Overall Category Winner
“Renovations over \$500,000”**

Paul Reed Homes are delighted to announce that we've received a **Gold Award** at this year's Canterbury RMBA House of the Year competition, for a very difficult Renovation project we completed recently at Hackthorne Road. And although it was a very difficult project to be involved with, we are very proud of the outcome - despite having to deal with some major technical challenges as well as very tricky site access.

The house itself was a very old three-storey hill-home that required a total re-build inside, and involved fitting some massive support beams throughout the lower areas and of course in extremely cramped spaces!

However, thanks to our great team of Tradesmen, and an excellent relationship with the Architect, the client and his family were absolutely delighted with the finished result. **And we are pleased to say that everyone is still talking to each other!**

Difficult Projects?

Right now we're looking at a pretty full book for the next 6 months, but if you have a particularly challenging project coming up that might need some very careful attention to detail, and a little *“thinking outside the square”*, keep us in mind as we'd be delighted to meet for a chat to see how we might be able to help you.

Kind Regards,
Paul Reed

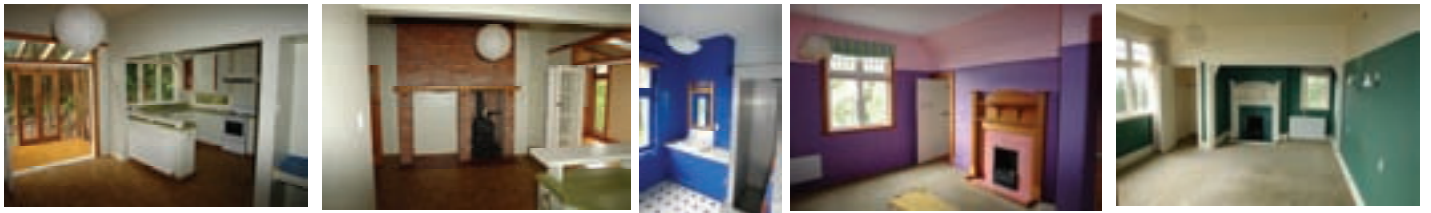


Paul Reed homes
the human touch

po box 3224, christchurch 8140
p 3858574 f 3858054
e paulreedhomes@xtra.co.nz
w www.paulreedhomes.co.nz



More than just a Make-over!

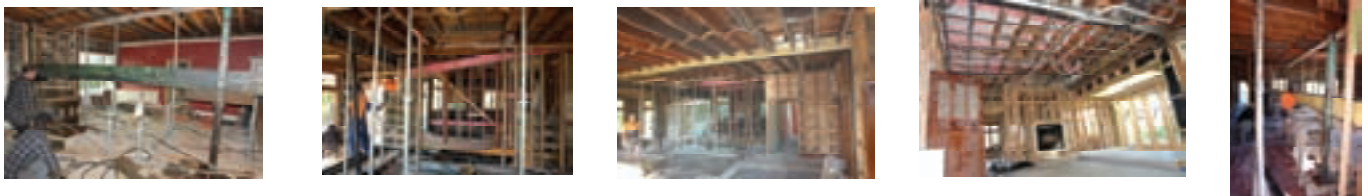


Small rooms typical of 1911 - "Remove most of the middle floor walls", said the owner!

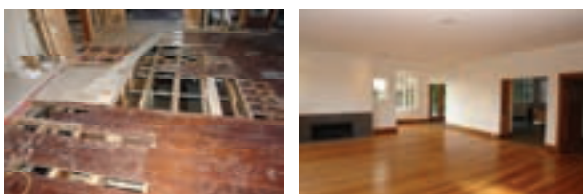


This is serious stuff - Don't try this at home!

Imagine contending with 3 floors of mass remodelling and renovation on this scale. Every floor, wall & ceiling presented itself with a list of unique challenges.



The house became a forest of props while the new structure was built inside the old one. Grid lines were formed to bring as many areas as possible back into square and plumb - which were up to 60mm out! It was important to achieve exact results so that large tiled areas were compromise free. Joinery also had to fit perfectly as if in a new structure.



The floors were a challenge - not only leveling floor joists, but patching the old Rimu T&G. Once a wall was removed it left a 90mm strip with no flooring, that was sometimes up to 12mm difference in height between the once separate rooms.



A beautiful match of old and new completed to exacting standards